

— *What does the* **FECAL EXAM** —

# REVEAL?

## COMMON EQUINE PARASITE EGGS



*Cyathostome/Small strongyle*  
95-110 x 40-50  $\mu$ m



*Oxyuris equi*  
85-90 x 40-45  $\mu$ m



*Large strongyle*  
80-90 x 45-50  $\mu$ m



*Dictyocaulus imfieldi*  
100 x 60  $\mu$ m



*Anoplocephala perfoliata*  
55-80  $\mu$ m



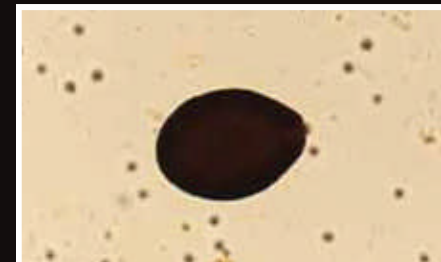
*Trichostrongylus axei*  
90-100 x 40-50  $\mu$ m



*Strongyloides westeri*  
35-50 x 25-30  $\mu$ m



*Parascaris equorum*  
90-100  $\mu$ m



*Eimeria leuckarti\**  
70-80 x 55-60  $\mu$ m